

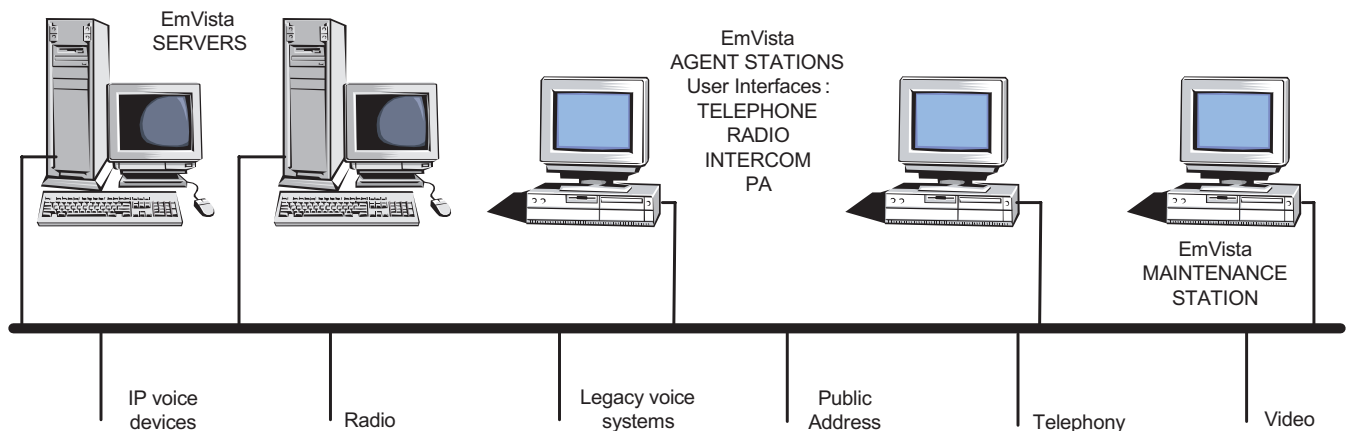
# Emcom Systems

127 Route 206 South, Suite 27  
Trenton, NJ 08610  
www.emcomsys.com

(609) 585-5500  
Fax: (609) 585-7723  
info@emcomsys.com  
**Communications Design**

## EmVista Central

EmVista Central is a head-end voice communications system that allows the easy management and merging of voice paths such as Radio, Telephone, Intercom and Public Address. Utilizing VoIP (Voice over Internet Protocol) it allows non-blocking communications with large scale capability. Multiple Agent Stations and additional voice path endpoints are easily added to the system with the snap of a network connection.



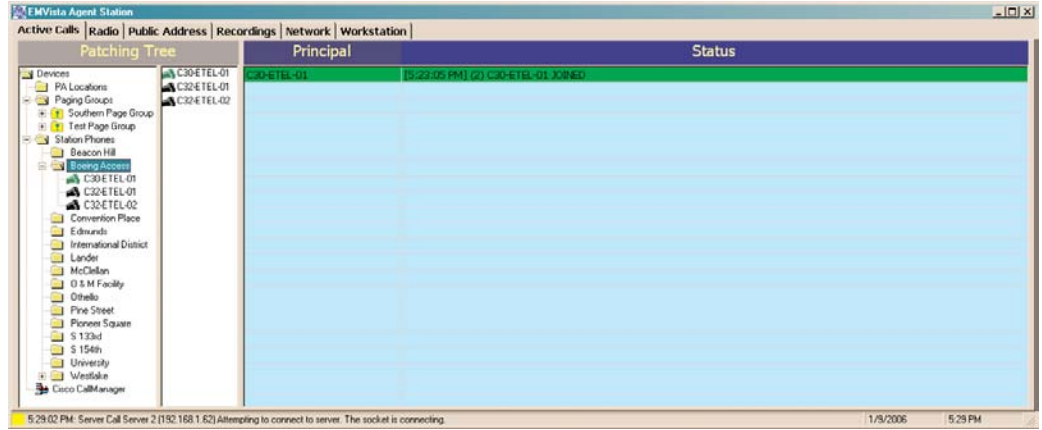
### Features

- Receive calls from and initiate calls to any voice endpoint device that is accessible from the EmVista Central network including PSTN phones, PBX phones, private analog and digital phones, radios, intercoms and PA Systems.
- Monitor and control any EmVista Central call in progress, including joining, leaving, patching in or removing other voice endpoint devices.
- Broadcast to user-created groups of page-equipped endpoint devices and enable other devices to do the same.
- Monitor any combination of radio talkgroups, patch any number of radio talkgroups together, and connect voice endpoint devices to talkgroups.
- Join radio talkgroups, with push-to-talk control.
- Provide endpoint location information to video equipment and video screenpops on Agent Stations.
- Connect to third-party public address systems and enable other endpoint devices to do the same.
- Log, record and playback all EmVista Central calls.
- Monitor the current health of essential network equipment.
- Log in with encrypted password and optional third-party authentication equipment.

REV 09/17/09

The dynamic nature of this product design dictates that the information contained in this document be subject to change without notice. Emcom Systems assumes no responsibility for errors and/or omissions contained herein.

**Active Calls Screen**

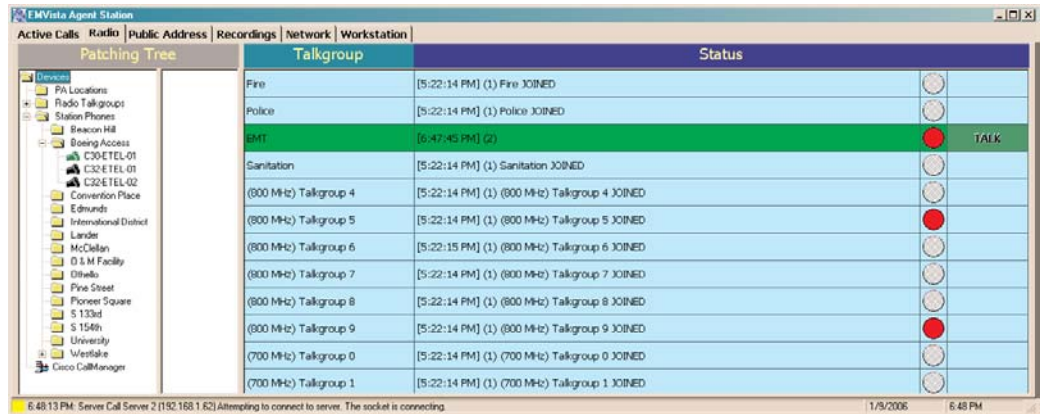


The agent controls all non-radio communications on the Active Calls screen and can tell at a glance the current connection status of any call. Connection states are color-coded, and calls awaiting attention - unanswered calls and calls on hold - are flashed continuously.

An agent joins a call by clicking on it and leaves by joining another call or selecting LEAVE from the disposition menu that is invoked by clicking the call. Right-clicking a call pops up a menu with advanced operations, including dial pad, speed dial buttons and a participants list.

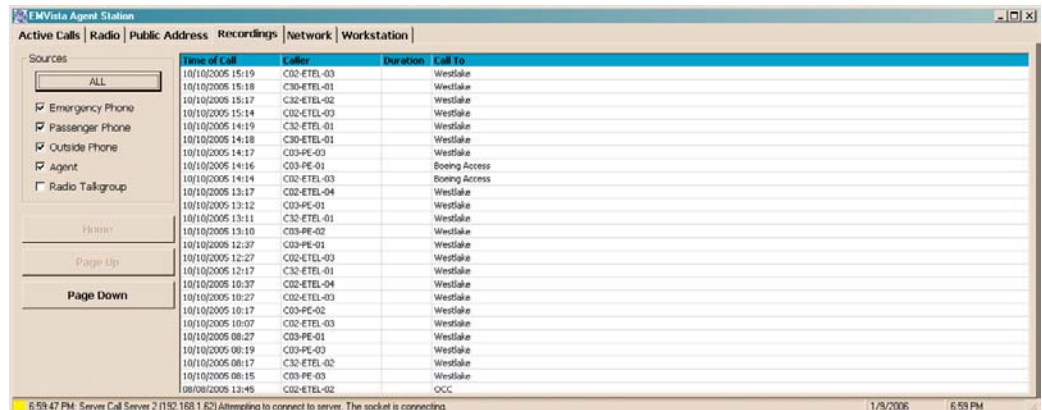
Other devices are added to a call using the Patching Tree on the left. To add a phone or phones to a call, drag the associated icon(s) from the Patching Tree onto the call.

**Radio Screen**



The Radio screen is similar to the Active Calls screen but with additional indicators and controls specific to radio. Active channels are indicated in a column in the status display and a Push-to-Talk column is added to enable talking on a specific channel. Multiple channels or talkgroups can be joined by simply dragging them together. Non-radio devices are joined with radio by dragging them from the Patching tree.

**Recordings Screen**



EmVista Central logs and records all calls whether they are managed by an agent or not. They can be reviewed, sorted by call device type and played back from this screen. Clicking a recording starts playback.